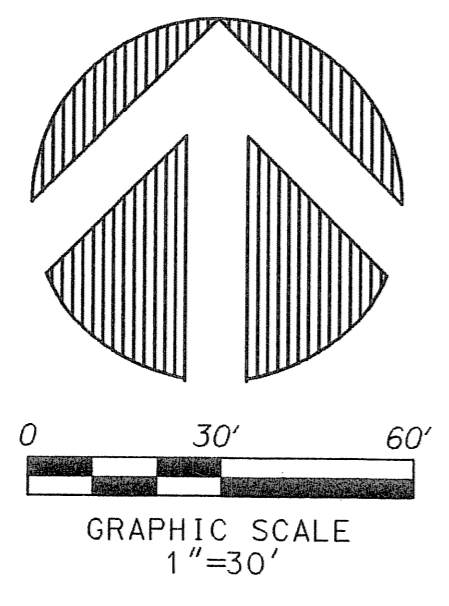


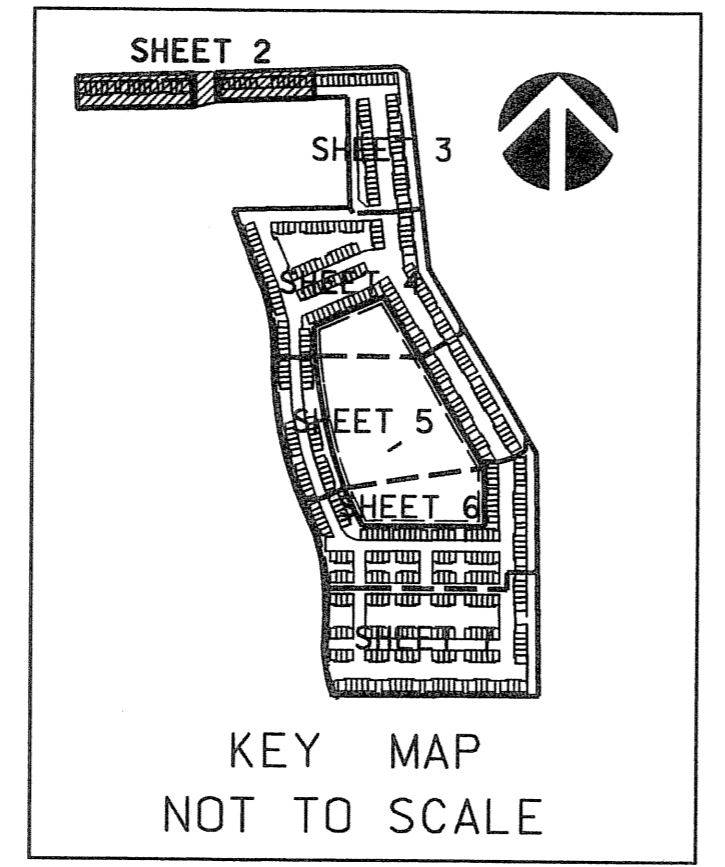
**PERIMETER**  
 SURVEYING & MAPPING  
 Prepared by: Jeff S. Hodapp, P.S.M.  
 Certificate of Authorization No. LB7264  
 951 Broken Sound Parkway, Suite 320  
 Boca Raton, Florida 33487  
 Tel: (561) 241-9988  
 Fax: (561) 241-5182



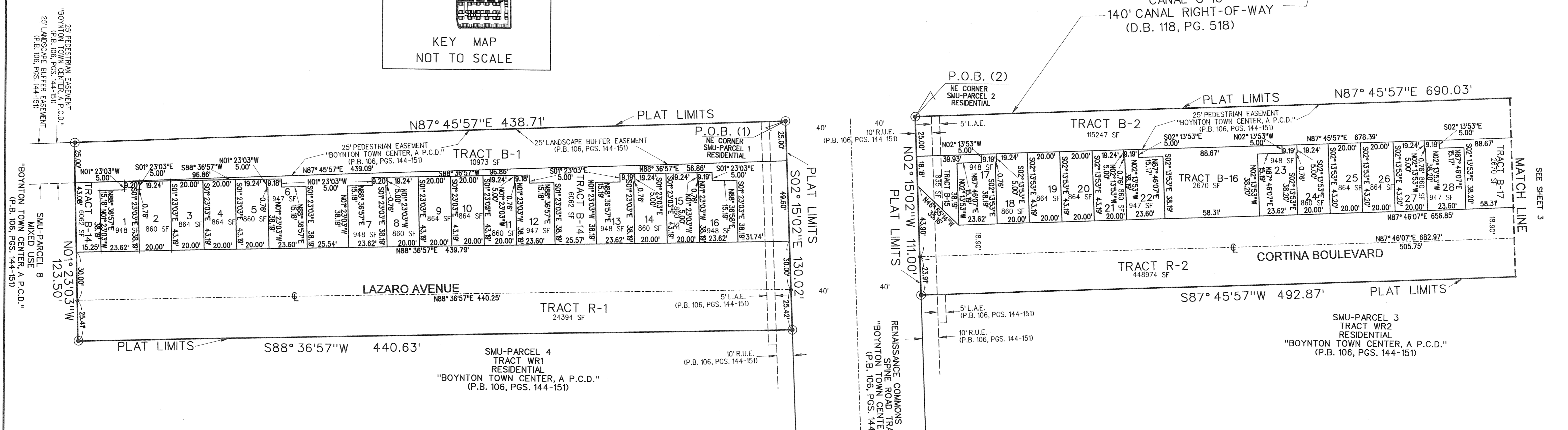
# CORTINA P.U.D.

A REPLAT OF PARCELS "SMU-PARCEL 1 RESIDENTIAL" AND "SMU-PARCEL 2 RESIDENTIAL"  
 "BOYNTON TOWN CENTER, A P.C.D." (P.B. 106, PGS. 144-151, P.B.C.R.) IN SECTION 17,  
 TOWNSHIP 45 SOUTH, RANGE 43, EAST, CITY OF BOYNTON BEACH,  
 PALM BEACH COUNTY, FLORIDA. JUNE, 2006

62



SHEET 2 OF 7



**ABBREVIATIONS :**

AC.	ACRES
CH	CHORD
CHB	CHORD BEARING
CONC.	CONCRETE
COR.	CORNER
D.	DELTA (CENTRAL ANGLE)
D.E.	DRAINAGE EASEMENT
L.A.E.	ARLENGTH
L.B.	LIMITED ACCESS EASEMENT
L.B.E.	LICENSED BUSINESS
L.M.E.	LANDSCAPE BUFFER EASEMENT
L.S.	LAKE MAINTENANCE EASEMENT
L.S.E.	LICENSED SURVEYOR
L.W.D.D.	LIFT STATION EASEMENT
MON.	LAKE WORTH DRAINAGE DISTRICT
O.R.B.	MONUMENT
N.R.	OFFICIAL RECORDS BOOK
P.B.	NON-RADIAL
P.B.C.R.	PLAT BOOK
PG.	PALM BEACH COUNTY RECORDS
P.C.P.	PAGE
P.O.B.	PERMANENT CONTROL POINT
P.O.C.	POINT OF BEGINNING
P.R.M.	POINT OF COMMENCEMENT
P.S.M.	PERMANENT REFERENCE MONUMENT
P.U.D.	PROFESSIONAL SURVEYOR & MAPPER
R	PLANNED UNIT DEVELOPMENT
R/W	RADIUS
R.U.E.	RIGHT-OF-WAY
SEC.	ROAD AND UTILITY EASEMENT
S.F.	SECTION
U.E.	SQUARE FEET
	UTILITY EASEMENT

**LEGEND:**

- SET P.R.M. (UNLESS OTHERWISE NOTED)-4" DIAMETER CONC. MON. WITH ALUMINUM DISK STAMPED •LB7264
- P.C.P.
- ⊕ CENTERLINE

SEE SHEET 3

MATCH LINE